

Family Matters: Findings from a 25 Year Longitudinal Study of Mental Health from Childhood to Adulthood



Society for Social Work and Research
Symposium Session 2 January 16, 10-11:45am

PRESENTERS, DISCUSSANTS and SLS STAFF

Presenters:

Helen Reinherz

Abbie Frost

Jennifer Tanner

Discussants:

Stefan Krug

Kathleen Millstein

SLS Staff:

Sasha Berger

Abby Bond

Kathleen DelRossi

Julie Leis

Angela Paradis

Supported by the National Institute of Mental Health [R01 MH41560]

Order of Presentations

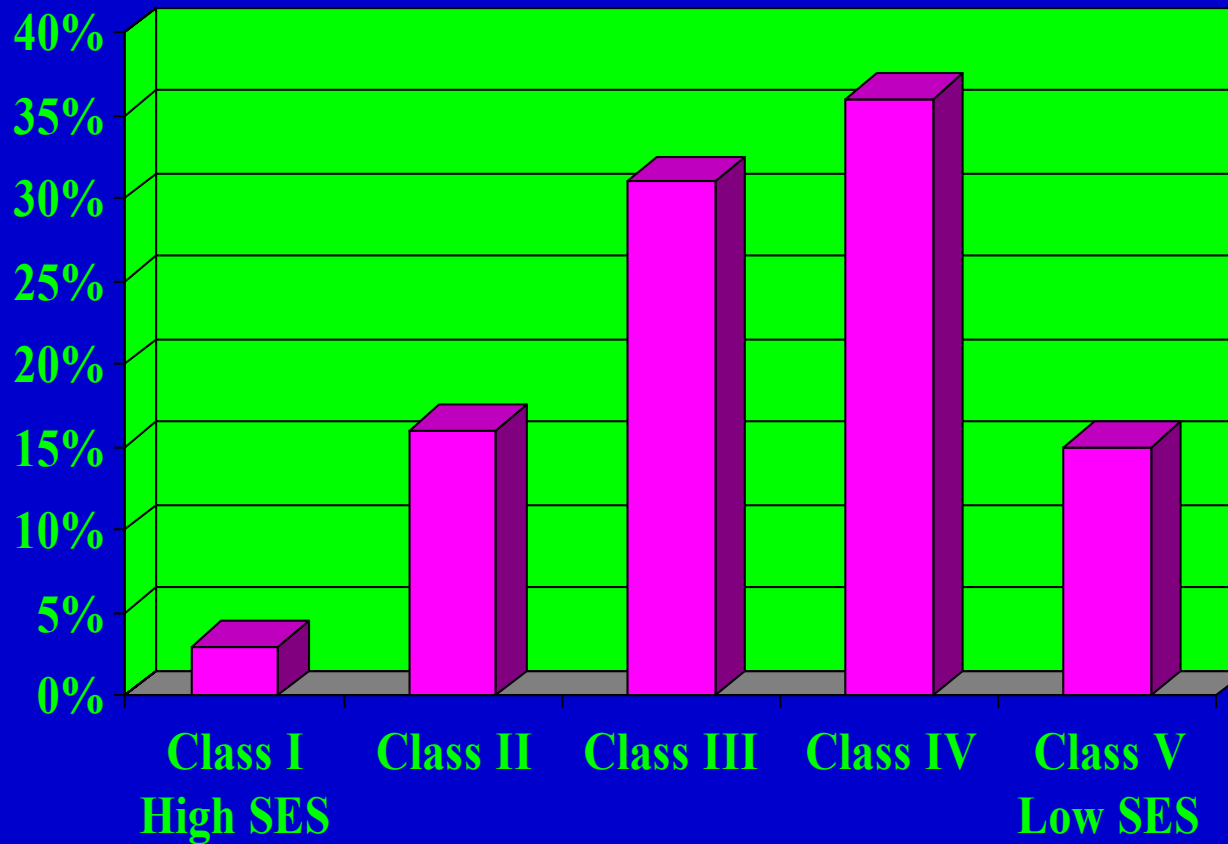
1. How Does the Family Matter? Tracing Risk and Protective Factors from Pre-school through Adolescence
2. Early Risk Factors for Alcohol Dependence in Late Adolescence
3. Family Influences on Emerging Adult Adjustment

Background:

The Simmons Longitudinal Study

- One community
- From 1976 to 2004
- Started pre-kindergarten, age 31 now
- Today: through ages 18 and 26
- Family influences
- Risk Factors
- Protective Factors

Sample SES



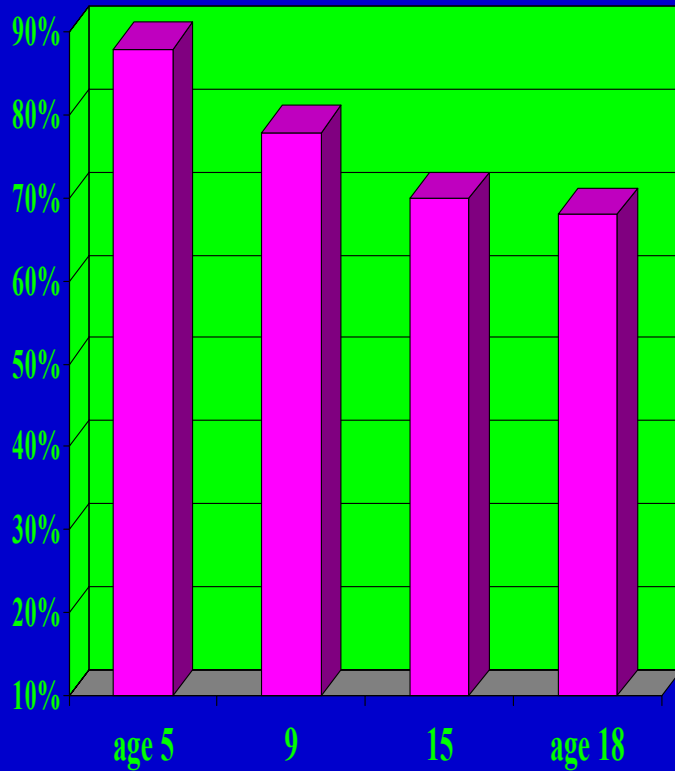
Community Neighborhoods



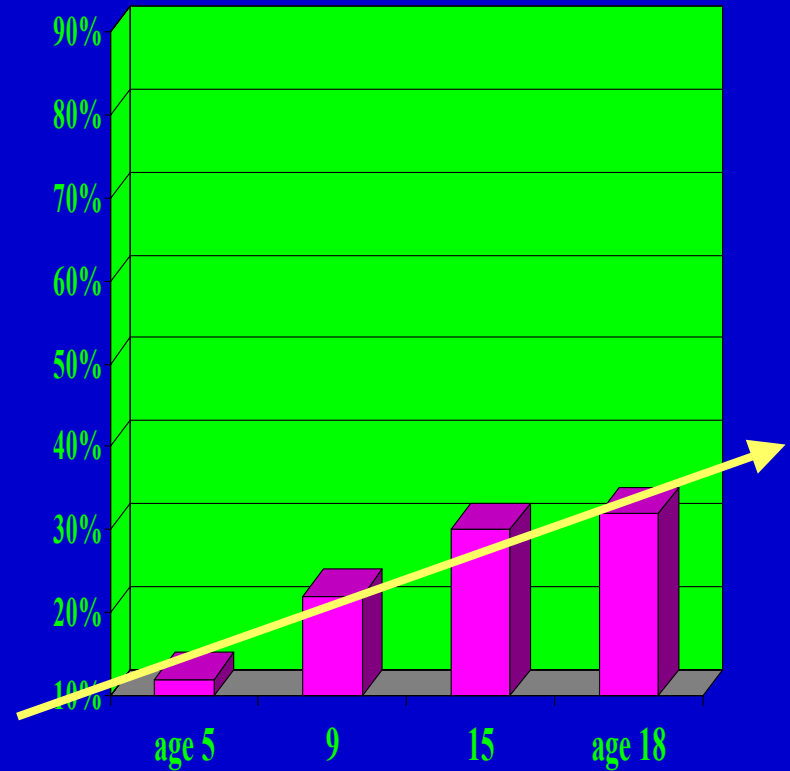
Community Schools



Household Composition

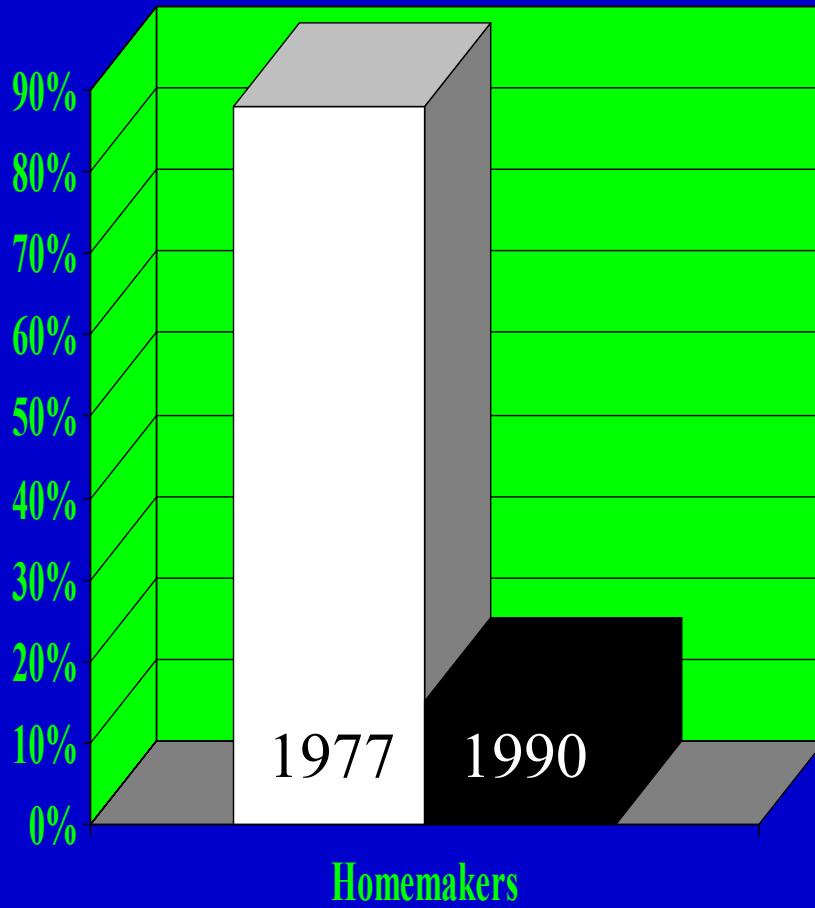


2 Biological Parent



Single Parent & Stepfamily

Household Composition (cont'd)



OVERALL GOALS FROM 1976 TO 2004

1. To study the development of a community population of children; to trace the pathways to good and poor outcomes
2. To identify risk factors for mental disorders and maladaptive development to facilitate early identification and treatment
3. To identify malleable protective factors for those at risk for poor outcomes as guidelines for programs of prevention